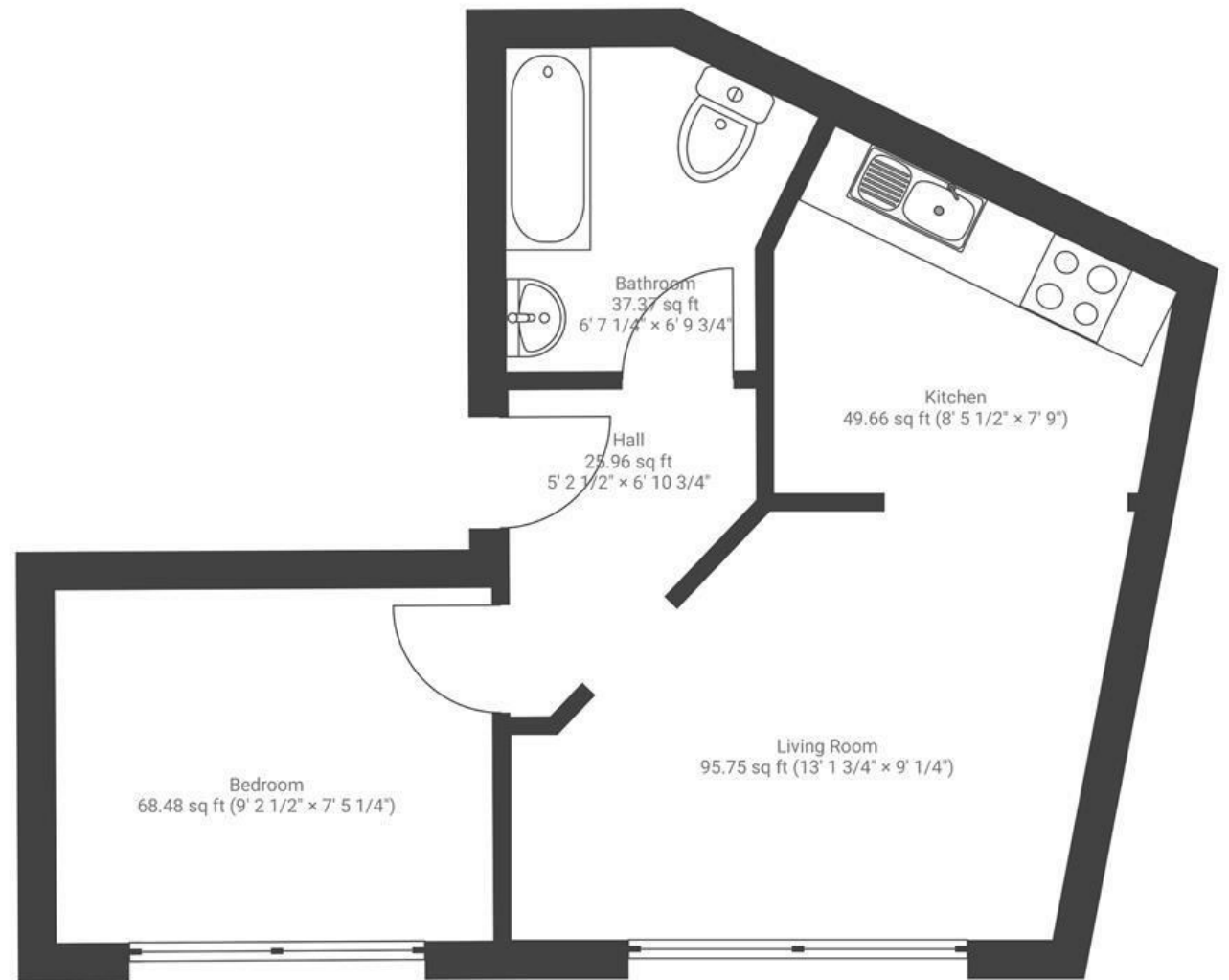


Chalks Road

ST GEORGE

APPROXIMATE FLOOR AREA
27.8 SQM / 300 SQFT



Boardwalk

Chalks Road , BRISTOL

£

£165,000



BS5 9EP

zzz

1 Bedrooms



1 Bathrooms

"We love the flat for its location — with the shops, cafés, and restaurants of Church Road on our doorstep, and St George's Park just a 30-second walk away, it has made life so easy. Waking up to the sun flooding the flat with morning light through the big windows is a joy, and in the evenings, the space transforms into a cosy sanctuary to unwind in."

